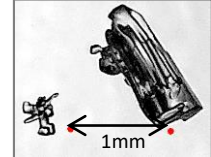
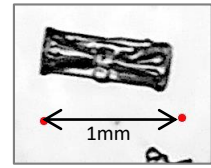
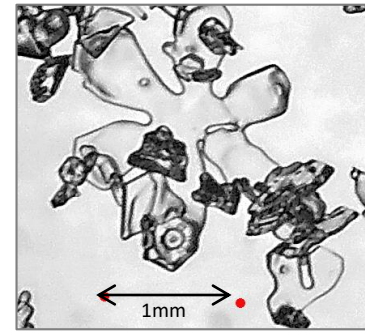
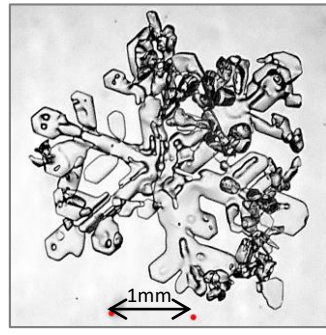
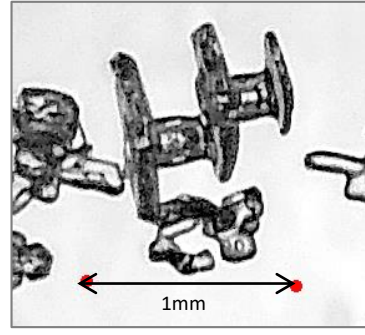
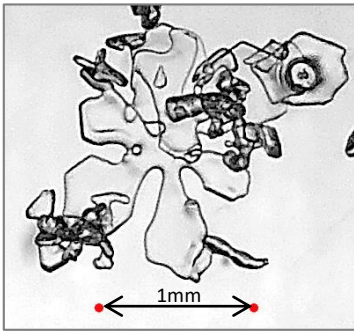
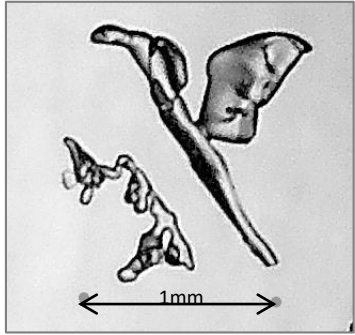
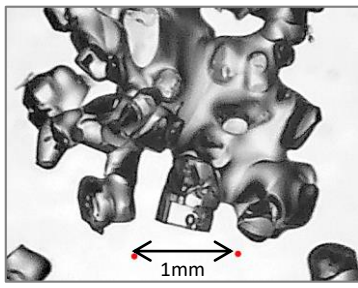
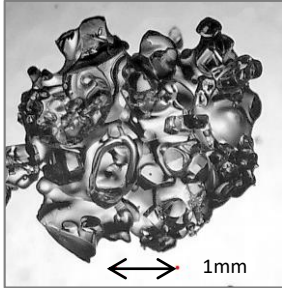


④

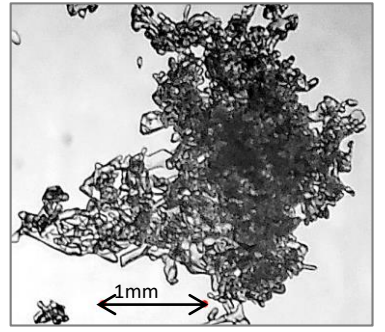
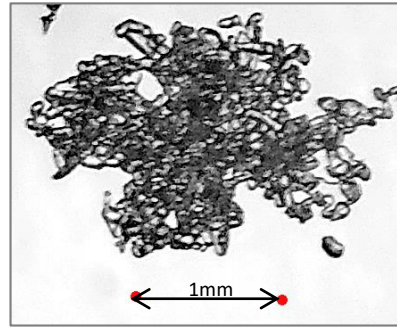
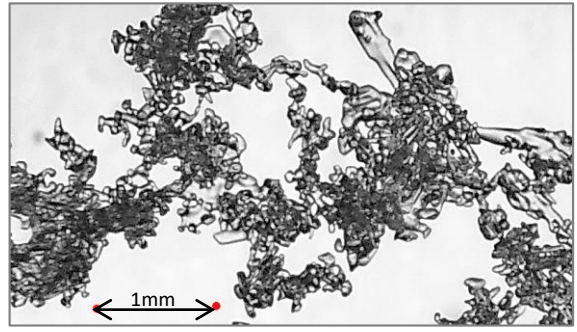


2月5日 7:05～  
薄曇り、気温-9.4℃  
積雪深: 45cm  
26～27cmで手首3回で  
破壊、雲粒なし結晶は  
まだ鮮明だった、  
要: 注目/警戒

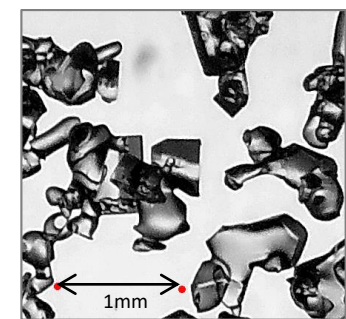
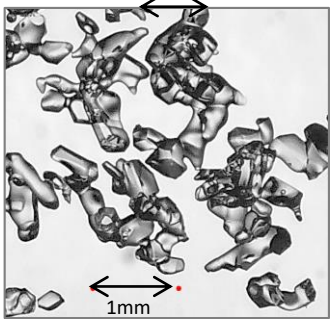
③



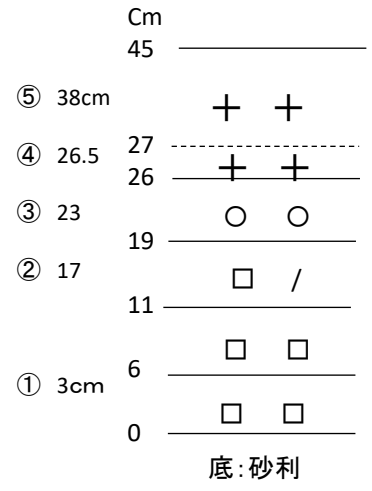
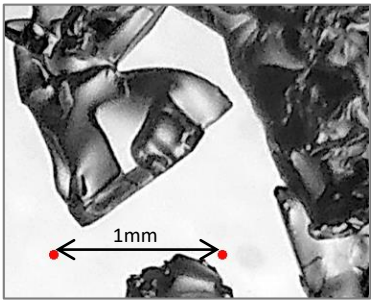
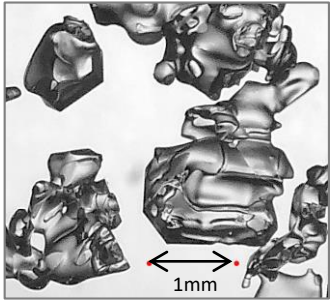
⑤



②



①



2月3日午後、低気圧前面の降雪。雲粒なし、第28号

27cmの層境界は非常に不鮮明 (目視では判らない)

2月3日午後の「低気圧前面の降雪(「雲粒なし」)は残っていて、破壊しやすい。

