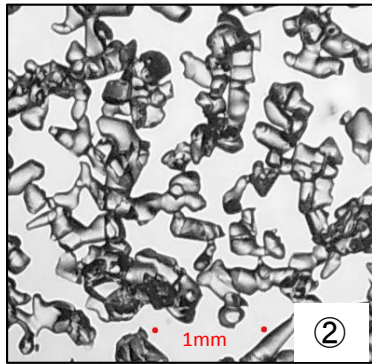
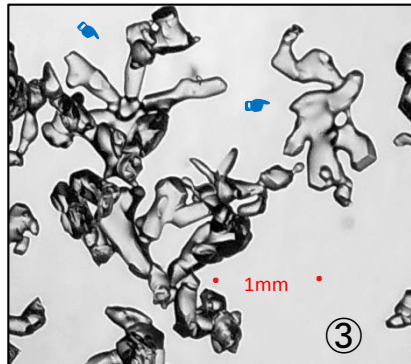


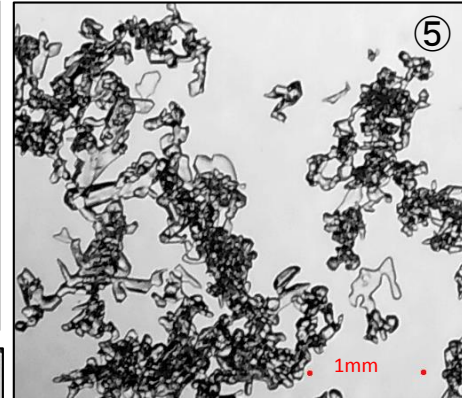
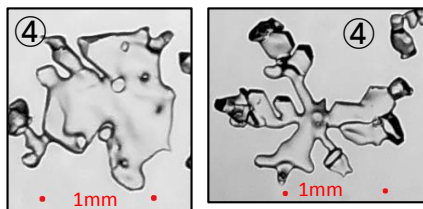
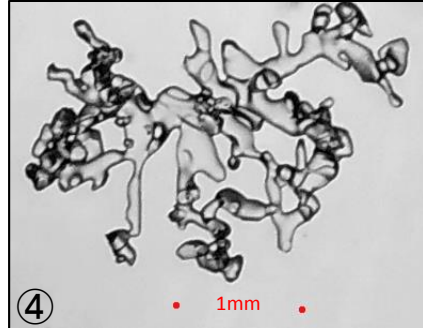
ざらめ・こしも



しまり(全てが丸みを)

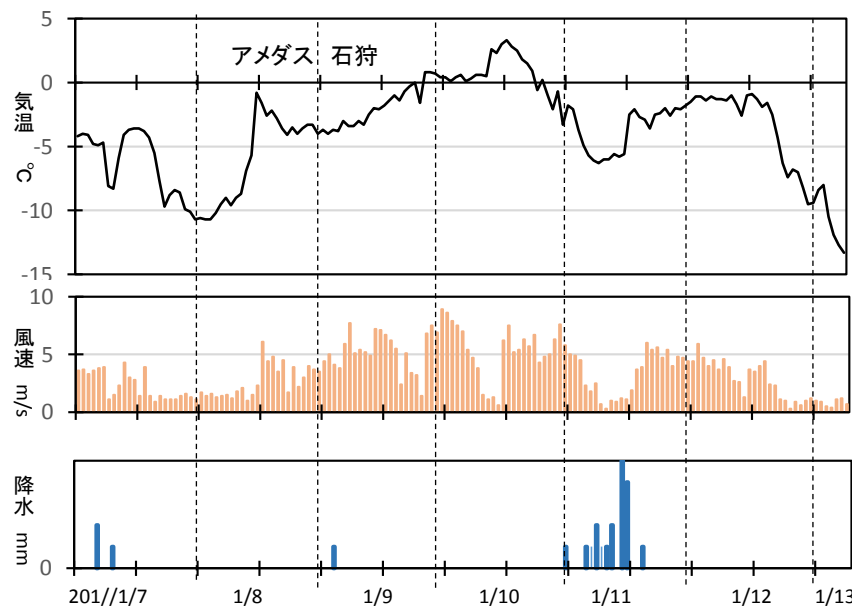
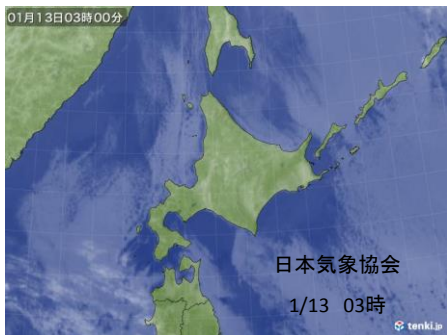
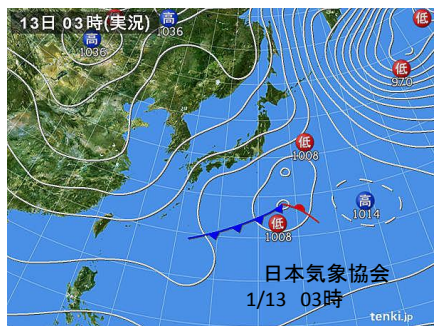
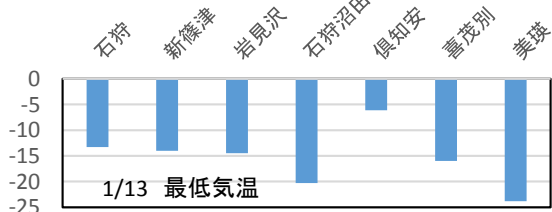
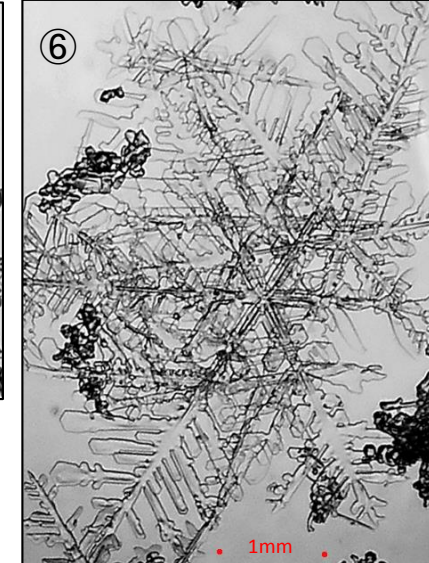


こしまり(樹枝状が残っている)



雲粒まみれの新雪

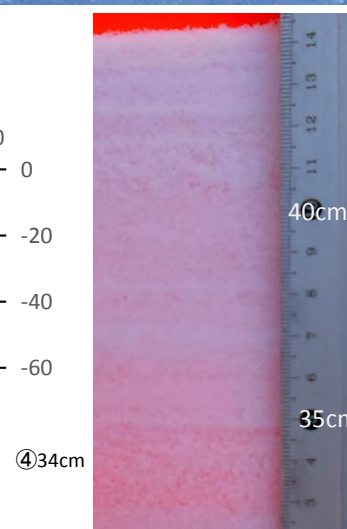
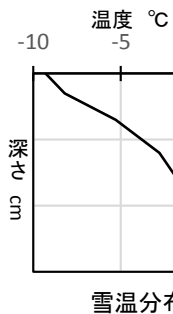
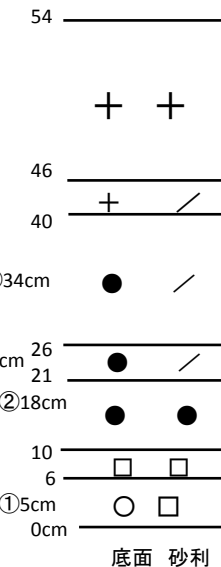
2019/1/13 7:40 晴 -7.5°C
風なし この冬一番の冷えか？。
石狩、空知、上川で冷えたが後志は
それほど冷えなかった。



表面に光って見える結晶(水平)



雲粒なし樹枝(一見表面霜に見えた)



透けて見える層