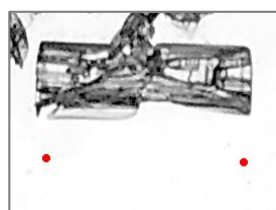
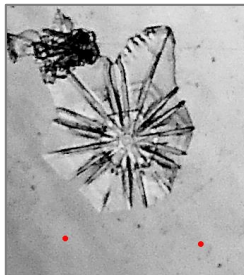
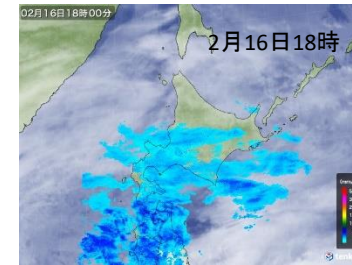
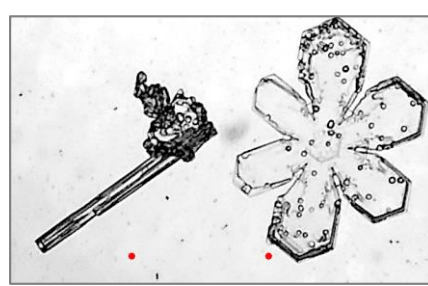
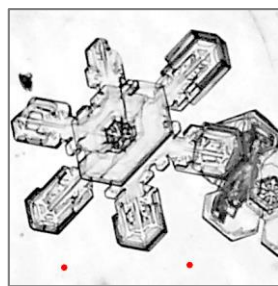


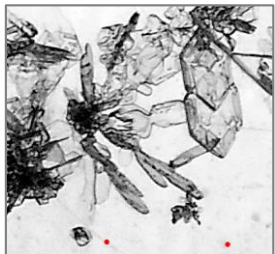
①



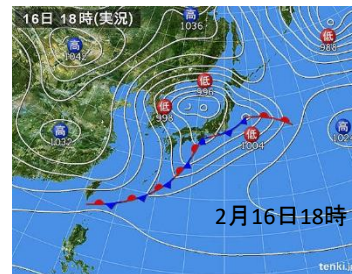
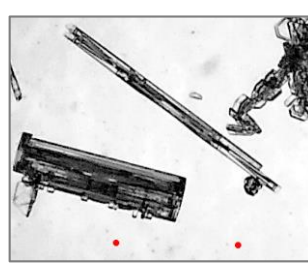
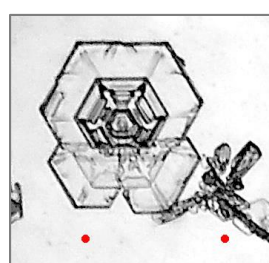
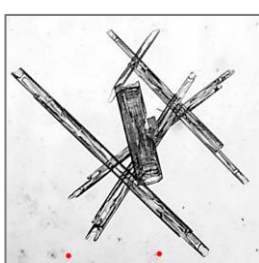
⑥



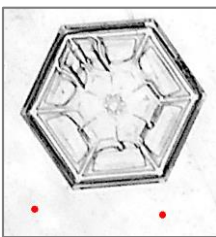
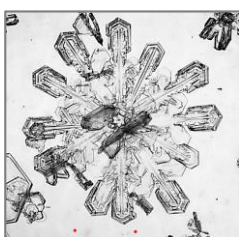
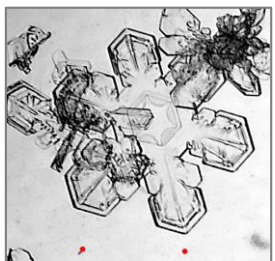
②



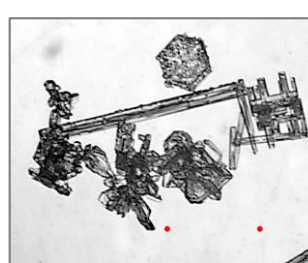
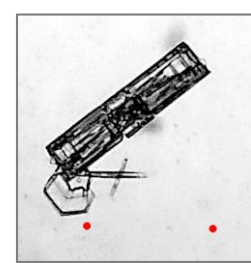
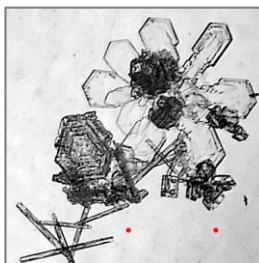
⑦



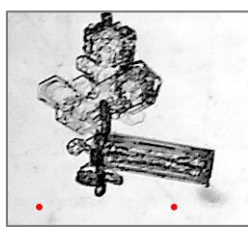
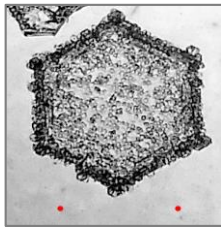
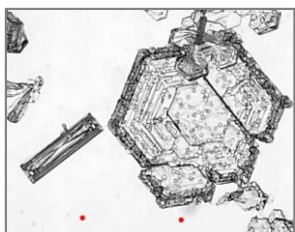
③



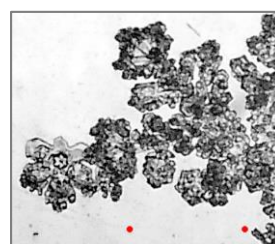
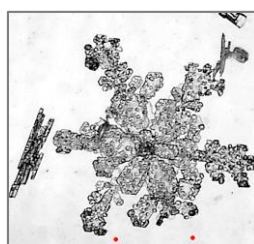
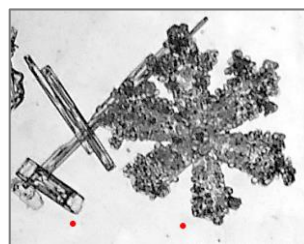
⑧



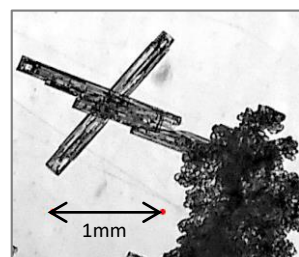
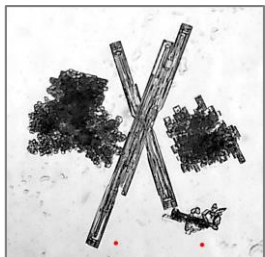
④



⑨



⑤



①:2/16、17:00 ②:18:20 ③:19:45 ④:20:55 ⑤:22:30  
⑥:2/17、0:00 ⑦:02:10 ⑧:03:55 ⑨:05:40 6:30頃雪止む  
低気圧の移動速度が遅く、長時間「雲粒なし結晶」が降った。

赤点間は1mm

低気圧前面の降雪(雲粒なし)

札幌の気象(2020年2月16日～17日)

時刻	降水	気温	風向	風速	積雪深	気圧
9	0	-4.7	東	1.3	51	1022.6
10	0	-4.1	東南東	1.9	51	1021.9
11	0	-3.4	南東	1.7	50	1020.8
12	0	-3	東北東	2.2	50	1019.5
13	0	-3	東	2	50	1018
14	0	-2.7	東北東	1.9	50	1017
15	0	-2.8	東	2.8	49	1016.5
16	0	-4	南南東	2.1	49	1015.8
17	0	-4.4	南	2.9	50	1015.5
18	1	-4.7	南南東	1.3	51	1014.6
19	0.5	-4.4	南南東	1.9	53	1013.4
20	1	-4.4	南南東	1.1	53	1012.7
21	1	-4.3	南南東	1.6	54	1011.5
22	1.5	-4.5	南南西	1.3	55	1010.3
23	2	-4.2	東	2.7	57	1009.2
24	2	-4.2	南南東	1.9	58	1008.1
1	2	-4.2	南	1.8	59	1007.3
2	1.5	-4.2	南南東	2.5	61	1005.9
3	2	-4.2	東南東	3.4	63	1004.8
4	2	-3.9	東南東	3.1	64	1003.9
5	1	-3.8	東南東	3.7	65	1003.4
6	0.5	-2.9	南東	3.6	65	1002.3