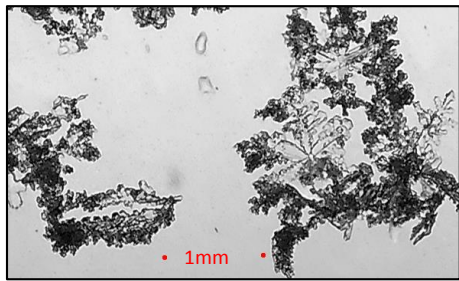
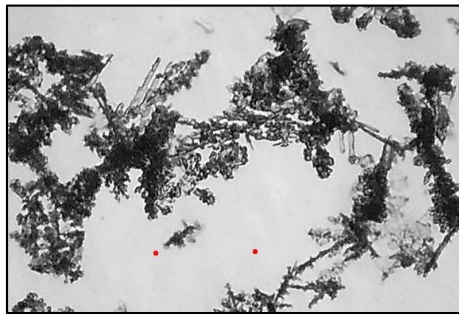
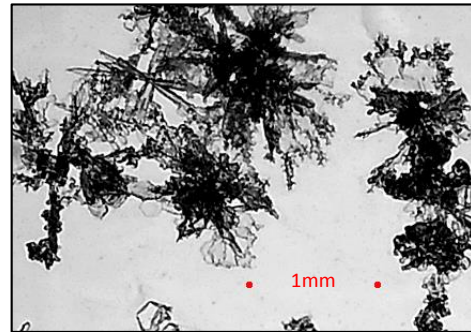
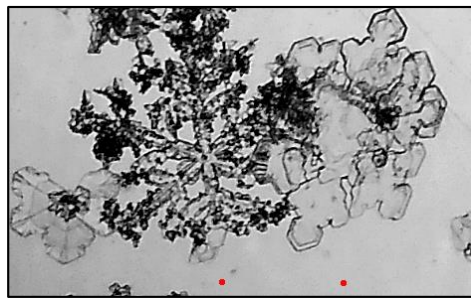


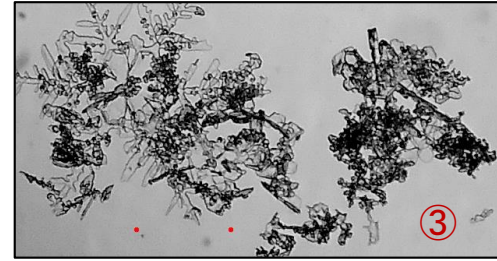
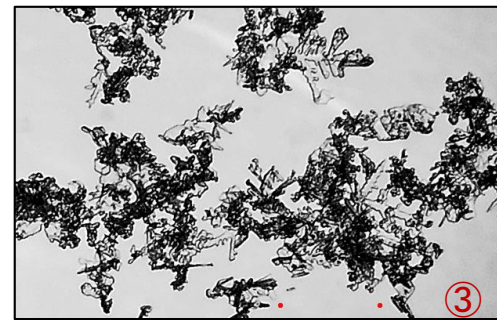
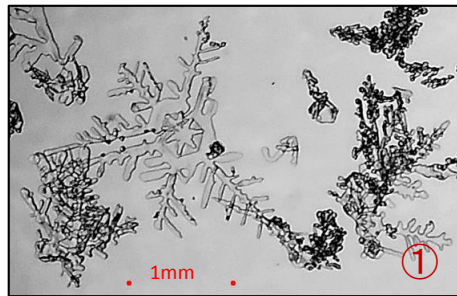
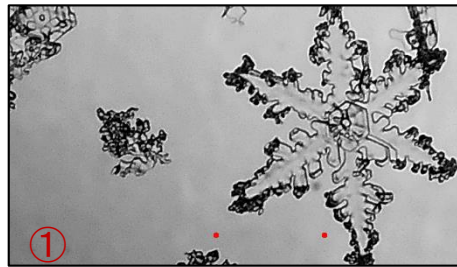
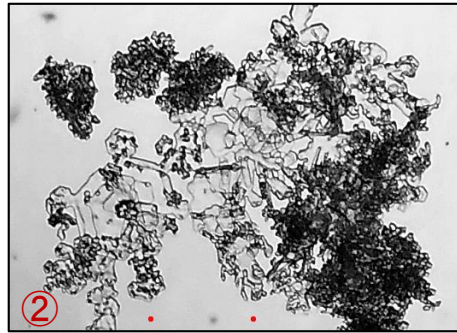
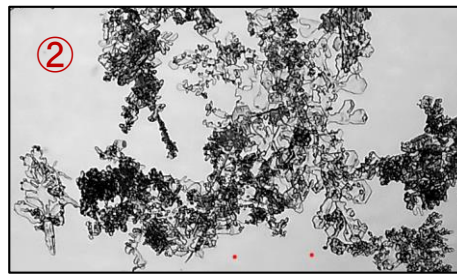
1/5 4:50頃の降雪



1/5 5:15頃の降雪

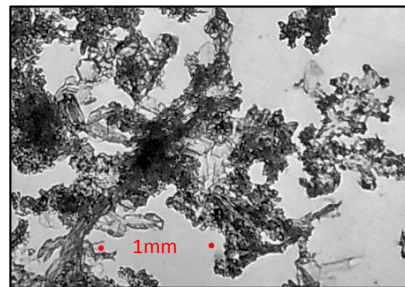
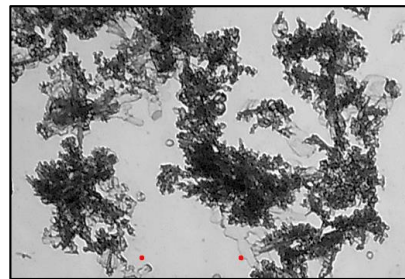
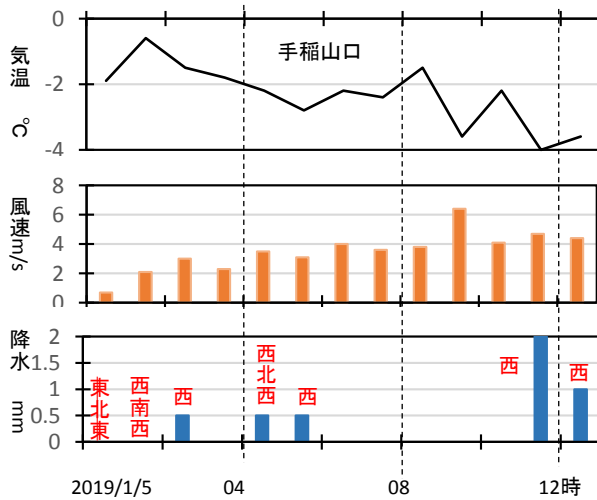
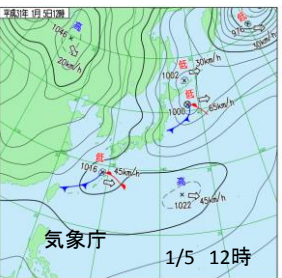
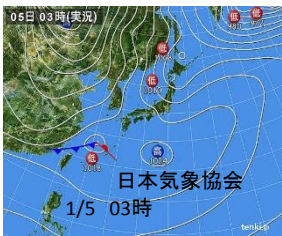


1/5 6:15頃の降雪



1/5、09時。車の屋根に積もった雪の層、6cmの厚さ。

気圧配置と降雪結晶形



1/5 13時頃の降雪。雲粒だらけ。吹雪

①は02時頃の降雪。一番雲粒が少ない。底の方が一番「ふわっと」積もった感じが肉眼でもわかる：アメダス石狩の降雪量は観測地点との差が大きかった。手稲山口の値に近い。

